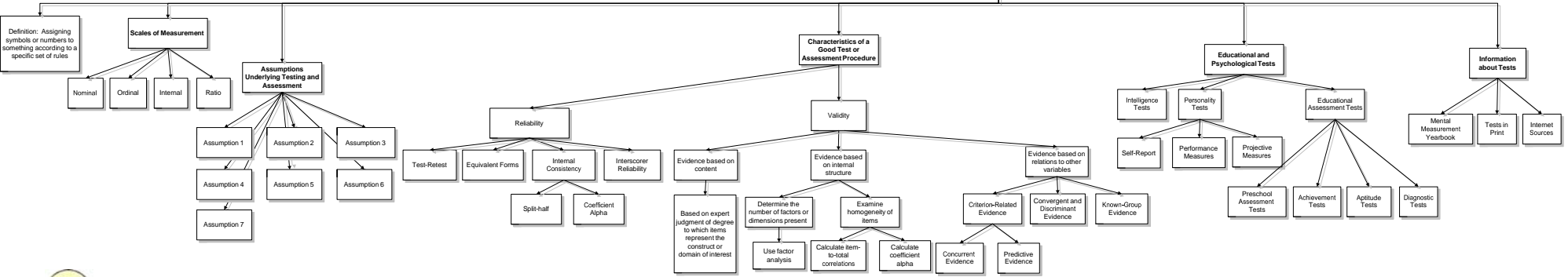


7 Standardized Measurement and Assessment



****Note:****
 Assumption 1: Psychological traits and states exist.
 Assumption 2: Psychological traits and states can be quantified and measured. Assumption 3: A major decision about an individual should not be made on the basis of a single test score but, rather, from a variety of different data sources.
 Assumption 4: Various sources of error are always present in testing and assessment.
 Assumption 5: Test-related attitudes and behavior can be used to predict non-test-related attitudes and behavior.
 Assumption 6: With much work and continual updating, fair and unbiased tests can be developed.
 Assumption 7: Standardized testing and assessment can benefit society if the tests are developed by expert psychometricians and are properly administered and interpreted by trained professionals.